

ADSORBED SHEET CUTTER

SG-ASC2312





- New 7-inch all-touch operation interface, more intelligent interaction;
- Wheel-type indentation design, up to 400 grams of paper can be cut;
- Double-pole design, can be half-cut/full cut/spot cut/indentation/drawing;
- Vacuum adsorption feed, suitable for special paper can remove static electricity;
- USB/U disk/Ethernet/WiFi, multi-mode connection;
- Online/offline use, QR code intelligent hybrid cutting;
- Automatic calibration of camera offset, simple and convenient;
- Independent software multi-function use, compatible with a variety of machine models;
- Cutstudio is easy to use and control multiple machines;
- Optimized for smooth point-break cutting to avoid frequent knife lifting.



Multiple Connection Methods



7 Inch Full Touch Screen

			
Vacuum adsorption	Point-break cutting	QR code intelligent hybrid cutting	The volume is less than 1 m ³



Wheel-type indentation design



HEFEI SAGA COMPUTER NUMERICAL CONTROL Co.,Ltd.

- Tel: +86-551-63444544
- Address: Block7 Liando U-valley, Jilin Crossing of Fanhua Avenue, Baohe District, Hefei, Anhui Province, PRC



Website



WeChat

PRODUCT PARAMETERS:

Model name	SG-ASC2312	
Working motor	X-DC servo motor Y-DC servo motor	
Positioning sensor type	Digital cameras (CCD)	
Control panel	7 inch capacitive touch screen	
Number of tool holders	Double tool holders	
Blade types	Blade/pen/wheel indentation	
Machine performance		
Media hold method	Vacuum adsorption	
Scanning code type	Mark or QR code	
Maximum cutting size	A3+ (330mm×740mm)	
Maximum loading depth	About 105mm	
Scanning speed	About 5s	
Cutting speed	15-1050	
Cutting force	Creasing: 0-2500gf Blade: 0-900gf	
Maximum weight of paper	120g-400g (varies for different cutting materials)	
Minimum cut character size	about 10 mm ² (varies depending on font graphics and cutting material)	
Internal storage space	Memory size: 128M	Function: For storing cutting files use
Mechanical resolution	0.02mm	
Programmable resolution	HPGL 0.025mm	
Repeat precision	≤0.05mm	
Cutting Media Types	Self-adhesive paper, cardstock	
Software and compatibility		
Connectivity	port, network port	
Source	WiFi and USB flash drive	
Software and compatibility	Professional Digital Cut software CutStudio CorelDRAW / Illustrator Plug-in	
Power and working environment requirements		
Working power	Maximum 320W	
Voltage and current	100VAC-277VAC,50 / 60Hz,Maximum current 4.2A	
Operation environment	Temperature:+5°C to +35 °C (41°F-95°F), Humidity:30% -75%RH (Non-condensing)	
Dimensions and Weight		
Actual dimensions	L740~780mm×W780mm×H1340mm	
Package dimensions	L1110mm×W860mm×H1200mm	
NW/GW	146±5Kg/188±5Kg	

This parameter is subject to change without prior notice. The company reserves the right of final interpretation

APPLICABLE MATERIALS:

Jam Paper

Coated Paper

Sticker

Kraft Paper

PVC

PET

APPLICATION DISPLAY :



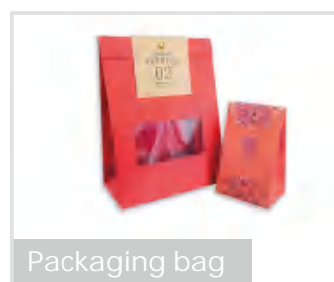
Packaging box



Table tag



All kinds of tags



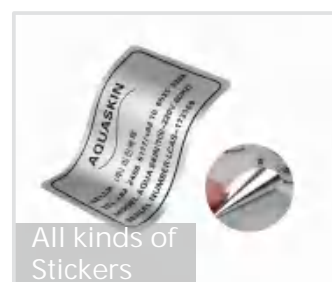
Packaging bag



Card coupon



Paper bag & Envelope bag



All kinds of Stickers